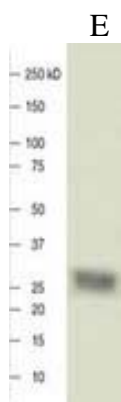


Anti-M₁ (A/California/06/2009/(H₁N₁))



Product Name	Anti-M ₁ ((A/California/06/2009/(H ₁ N ₁)))
Catalog No	IT-003-036
Source	Rabbit Polyclonal Antibody
Formulation	Each vial contains 200 µg purified IgG in 100 µl PBS with less than 0.1% gelatin and 0.1% sodium Azide.
Immunogen	M ₁ ((A/California/06/2009/(H ₁ N ₁))) protein (Genebank accession ACP41937)
Applications	Western Blotting (1:200-1:1000), ELISA(1:100-1:10000)
Specificity	Reacts with M1(H ₁ N ₁) protein. Cross-reactivity to other subtypes not tested.
Storage	Keep it at 4°C if used within a month. For long term storage, split it into small aliquots and keep at -80°C. <u>Avoid repeated freezing and thawing</u> . The product will be expired one year after receiving if stored properly. Non-hazardous. No MSDS required.
Use Limitation	For research use only, not for use in diagnostic procedures.



E: M₁ ((A/California/06/2009/(H₁N₁)))